



CONTENTS:

- Monsoon Progress
- Soybean: Domestic scenario
- Soybean: International scenario
- Price scenario
- Policy changes
- Export of soybean and products
- Import of soybean and products

PREPARED BY:

Ram Manohar Patel, Scientist
(Market Intelligence Cell, ICAR-IISR)

Dr. Purushottam Sharma, Sr. Scientist
(ICAR-NIAEPR)

PUBLISHED BY:

Dr. NitaKhandekar, Director

Monsoon Progress

- The onset of Southwest Monsoon was normal on 1st June, 2020, and advanced near normal over most part of the country, about 7-12 days early over central and northwest India except north-eastern region where it was delayed by a week.
- The monsoon covered coastal and central India till 14 June. In the recent past, such an early coverage of Southwest Monsoon occurred in 2013 and it had covered the entire country by 16th June.

Table 1. Rainfall (mm) distribution till 30th Sept, 2020

Sub-divisions	Actual	Normal	% Departure
West MP	970.9	857.7	+13
East MP	1031.6	1048.4	-2
Madhya Maharashtra	966.6	751.2	+29
Marathwada	866.1	668.8	+30
Vidharbha	851.9	943.1	-10
East Raj	591.7	602.9	-2
Chhatisgarh	1234.3	1142.1	+8
Telangana	1095.4	751.9	+46
Rajasthan			
All India	957.6	880.6	+9

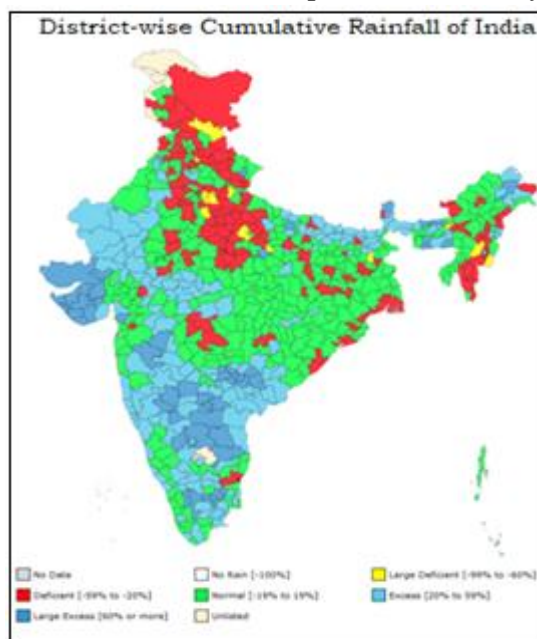


Fig. 1: District-wise Cumulative Rainfall of India

- The cumulative long period average (LPA; 1961-2010) of rainfall in India is 88.0 cm and the present year has been the third highest rainfall year (95.8 cm, 109% LPA) after 1994 (112% LPA) and 2019 (110% LPA).
- The major soybean growing regions (Madhya Pradesh, Chhattisgarh, Rajasthan, Gujarat, Vidarbha region of Maharashtra and some parts of Karnataka and Andhra Pradesh) received deficit to largely deficit rainfall conditions during second fortnight of July and till first week of

ICAR-Indian Institute of Soybean Research, Khandwa Road, Indore-452001

E-mail for suggestions: dsrdirector@gmail.com / Ram.Patel@icar.gov.in

August in some areas. However, after first week of August, India received rain with 13% - 41% above LPA till 2 Sept 2020.

- Seasonal rainfall of 4 broad homogenous regions, East & North-East (NE), North-West (NW), Central and South India has been 106%, 84%, 115% & 129% of LPA respectively (Fig. 2).

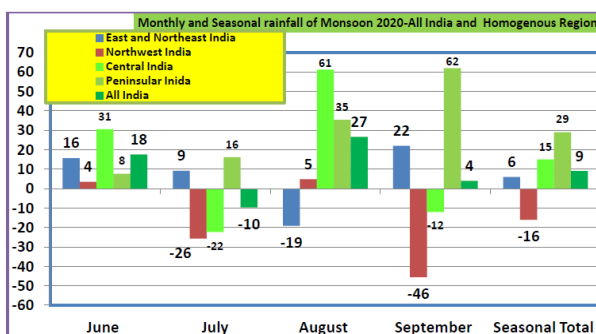


Fig 2. Monthly & Seasonal Rainfall % Departure of Broad Regions

Soybean: Sowing progress

- The timely onset of monsoon and ample amount of rainfall received in the soybean growing areas lead to the timely sowing of Soybean crop in almost all the major soybean growing areas of the country. Moreover, the even distribution of monsoon rainfall in the initial sowing days resulted in excellent sowing progress. Sowing of soybean was reported to be completed in 121.21 lakh ha area which is 6.4% higher than last year's area and 9.9% higher than the normal sown area in the country (Table 2).
- The increase of soybean area this year was recorded mainly in Madhya Pradesh, Maharashtra, Rajasthan, Gujarat and Uttar Pradesh.

Table 2: Sown area of soybean in India as on 18.09.2020 (Lakh Ha)

States	2020	2019	2018	2017	% change over 19-20	State Share (%)			
						20-21	19-20	18-19	17-18
Bihar	0.330	0.400	0.368	0.000	-17.5	0.27	0.35	0.33	0.00
Chhattisgarh	0.776	0.742	1.290	1.320	4.58	0.64	0.65	1.15	1.25
Gujarat	1.492	1.003	1.356	1.290	48.75	1.23	0.88	1.20	1.22
Karnataka	3.320	3.301	3.394	2.710	0.58	2.74	2.90	3.01	2.56
Madhya Prad.	58.540	55.160	53.180	50.100	6.13	48.30	48.42	47.22	47.30
Maharashtra	43.219	39.595	39.973	38.392	9.15	35.66	34.76	35.49	36.24
Rajasthan	11.002	10.608	10.461	9.690	3.71	9.08	9.31	9.29	9.15
Telangana	1.607	1.729	1.789	1.650	-7.06	1.33	1.52	1.59	1.56
Uttar Pradesh	0.380	0.208	0.199	0.195	82.69	0.31	0.18	0.18	0.18
Uttarakhand	0.250	0.260	0.240	0.250	-3.85	0.21	0.23	0.21	0.24
Others	0.298	0.518	0.368	0.318	42.47	0.25	0.46	0.33	0.30
Total	121.214	113.926	112.618	105.915	6.40	100	100	100	100

Source: MOA&FW, GOI (<http://agricoop.gov.in/sites/default/files/CWWG Data as on 18.09.2020.pdf>).

Soybean: Domestic scenario

- As per the first advance estimates, soybean production of India is estimated at 13.53 million tonnes from 12.06 million ha area in 2020-21. The fourth advance estimate for the year 2019-20 has been revised downwards from 13.51 million tonnes to 11.22 million tonnes from 12.09 million ha area (Table 3). The incessant rainfall in 2019 even during harvest period greatly affected the yield of soybean, as there was water stagnation in mature crop.
- Of the total *kharif* cropped area, oilseed occupied around 18% (~ 194.7 lakh ha) area as against the 12% (174.0 lakh ha) area during the same period in 2019-20. Among oilseeds, soybean covered 62% area followed by Groundnut 26% (Fig 3).

ICAR-Indian Institute of Soybean Research, Khandwa Road, Indore-452001

E-mail for suggestions: dsrdirector@gmail.com / Ram.Patel@icar.gov.in

- The Germination Standard of soybean seed has been reduced from 70% to 65% and then 65% to 60% again by Seed Division, DAC&FW for Kharif-2020, as the viability of seed was affected on continuous rainfall during harvest and water submergence of the crop.
- The overall intensity of pests and diseases was below economic threshold level in India. However, about 1160 ha area was infested by Stem fly in Indore, Khandwa, Khargone, Ujjain, Dewas, Sehore and Harda districts of Madhya Pradesh due to the long dry spell in July; and about 250 ha by Girdle beetle, Stem fly, *Spodoptera litura* and Root rot in Wardha and Amravati districts of Maharashtra (Source: Crop Weather Watch Group, MOA&FW).
- The distribution and amount of rainfall during the monsoon season and different crucial stages of the crop decides yield of *kharif* crops especially soybean which is a *rainfed* crop. The yield is likely to be marginally affected due to deficit rains during emergence/ vegetative phases and heavy rainfall during the maturity period in some parts of MP and Maharashtra; and sporadic incidence of insect-pest and disease infestation.

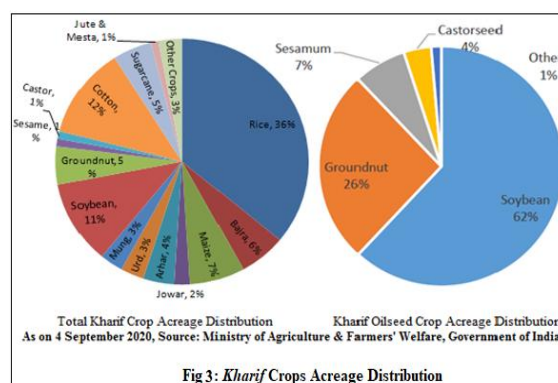


Fig 3: Kharif Crops Acreage Distribution

Table 3. Estimates of area, production and yield of soybean in India.

Year	Area ('000 Ha)	Production ('000 Tons)	Yield (Kg/Ha)	Change in Area (%)	Change in Production (%)	Change in Yield (%)
2017-18	10328.8	10933.0	1058			
2018-19	11131.3	13267.5	1192	5.41	21.35	15.03
2019-20	12091.0**	11215.0**	1122	-3.32	-15.47	-4.19
2020-21	12060.0*	13583.0*	1126	-0.32	21.12	0.36

* First Advance Estimate, ** Fourth advance estimates, CWWG.

Source: Directorate of Economics and Statistics, MOA&FW, New Delhi.

Soybean: International scenario (Source: AMIS Market Monitor, FAO)

- US, Canada, China and India experienced favourable conditions for soybean cultivation with record yields and total sown area. (Source: AMIS Market Monitor, FAO)
- USDA has approved HB4 soybean drought and water-stress resistant variety, developed by Verdeca as a joint venture between Arcadia Biosciences (US) and Bioceres (Argentina) on 9 August 2020. Hence, it allows HB4 for international commercialization.
- Soybean utilization rose slightly in 2020/21, with increased utilization in China, EU and US but lower in Brazil. However, the total utilization is expected to speed up globally after subdued expansion in 2019/20.
- Estimates of soybean production scaled up for 2020-21 mainly because of higher forecasts (due to favourable conditions at harvest time) for US and Brazil, which was more than offset marginal reductions elsewhere. The demand for soybean is high in China, EU and Argentina and is too met by importing it from Brazil and US in 2020/21 (Oct/Sept).
- The carry-out stocks of 2020/21 lifted around 8 percent since July due to higher forecast for US; but the closing stock is estimated to rise slightly as against the 2019-20.

ICAR-Indian Institute of Soybean Research, Khandwa Road, Indore-452001

E-mail for suggestions: dsrdirector@gmail.com / Ram.Patel@icar.gov.in

Soybean price scenario:

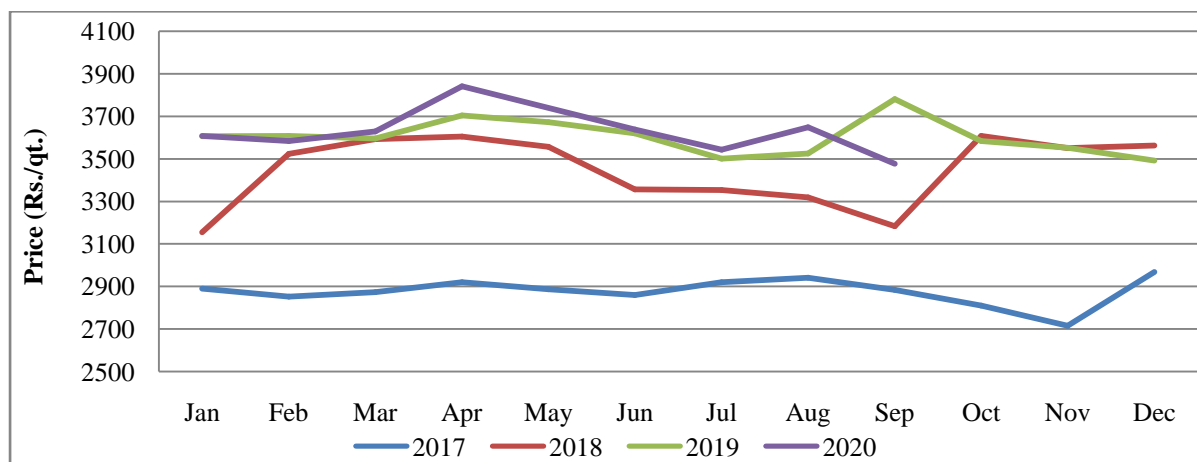
- On 23 August, the Food Safety and Standards Authority in India ordered that from 1 January 2021, imported food products including soybean, should not be genetically modified (GM) and should be of non-GM origin. [Source: AMIS, FAO]
- On 1 July, the Cabinet Committee on Economic Affairs has increased the minimum support prices (MSPs) of Soybean crop from Rs. 3710 per quintal to Rs. 3880 per quintal for marketing season 2020-21, i.e. 4.6 percent increase over last year. [Source: DES, Govt. of India]
- Soybean prices trading range bound in major soybean markets of the country, though with the reduced demand due to COVID lockdown and higher soybean production compared to previous year the prices dropped during March, 2020 months. The soybean prices traded lower than the corresponding months previous year due to higher expected production of *kharif* 2019. The *mandi* prices of soybean during September, 2020 are prevailing lower due to higher expected production of soybean (Table 2).

Table 4. Prices of soybean in major *mandies*. (Rs/qt)

State	Market	Jan-19	Jan-20	Mar-19	Mar-20	May-19	May-20	Jul-19	Jul-20	Sep-19	Sep-20
MP	Dewas	3023.0	3182.8	3122.5	3476.7	3596.1	-	3495.0	3463.9	3715.4	3636.4
	Dhar	3277.5	3541.1	3519.0	3578.0	3570.9	-	3422.2	3575.7	3645.8	3612.1
	Indore	3462.3	3580.7	3595.8	3629.0	3672.0	-	3500.6	3543.1	3781.4	3476.2
	Manasa	3532.0	3778.3	3719.5	3247.6	3566.9	-	3339.1	-	3592.6	-
	Ratlam	3497.3	3843.3	3624.6	3393.7	3648.8	-	3481.2	3499.2	3731.5	3512.9
	Ujjain	3768.4	3688.9	3776.8	3611.2	3702.0	-	3541.5	3608.8	3780.0	3508.5
MH	Akola	3431.8	3864.8	3569.5	3325.0	3643.6	3531.8	3532.4	3578.7	3679.8	3674.1
	Amravati	3335.9	3861.5	3385.8	3357.9	3436.8	3402.5	3484.5	3450.0	3735.5	3547.1
	Latur	3600.5	4182.4	3666.1	3677.7	3677.7	3731.9	3665.3	3652.9	3830.9	3692.1
	Washim	3518.5	4077.1	3533.3	3588.9	3582.9	4116.7	3490.5	3575.0	3692.1	3626.3
	Yeotmal	3416.4	3963.8	3500.8	3450.0	3516.7	3539.0	3485.0	3495.8	3633.1	3649.2
Raj	Baran	3451.8	4193.8	3502.7	3584.2	3519.3	3500.0	3357.0	3527.5	3783.0	3553.8
	BhawaniMandi	3443.8	4158.0	3465.9	3495.4	3679.8	3655.2	3499.4	3460.4	3909.6	3302.4
	Kota	3428.5	4113.9	3538.1	3553.0	3718.0	3599.0	3580.4	3648.7	3804.8	3613.1
	RamaganjMandi	3405.2	4046.1	3583.4	3557.0	3694.4	3457.4	3540.9	3556.4	3851.1	3628.6

Source: agmarknet.gov.in

- The soybean modal price of Madhya Pradesh has peaked this year during COVID-19 lockdown period in April month, and started declining gradually and traded below MSP as the monsoon progressed and crop harvest led the market arrivals (Fig 4).



ICAR-Indian Institute of Soybean Research, Khandwa Road, Indore-452001

E-mail for suggestions: dsrdirector@gmail.com / Ram.Patel@icar.gov.in

Figure 4. Price trends of soybean in Madhya Pradesh (Average of modal price)

- Wholesale price index (2011-12=100) for soybean, soya oil and soya meal, declined in the January-May 2020 months due to higher production and COVID situation. With the improvement in demand of oil and meal, the prices of soybean and other products improved in recent months (Fig. 5).
- The soybean prices rose in the domestic market as the positive sentiments prevailed during August month. Prices also rose due to strong demand from China and deteriorating crop condition in USA. [Source: NCDEX]

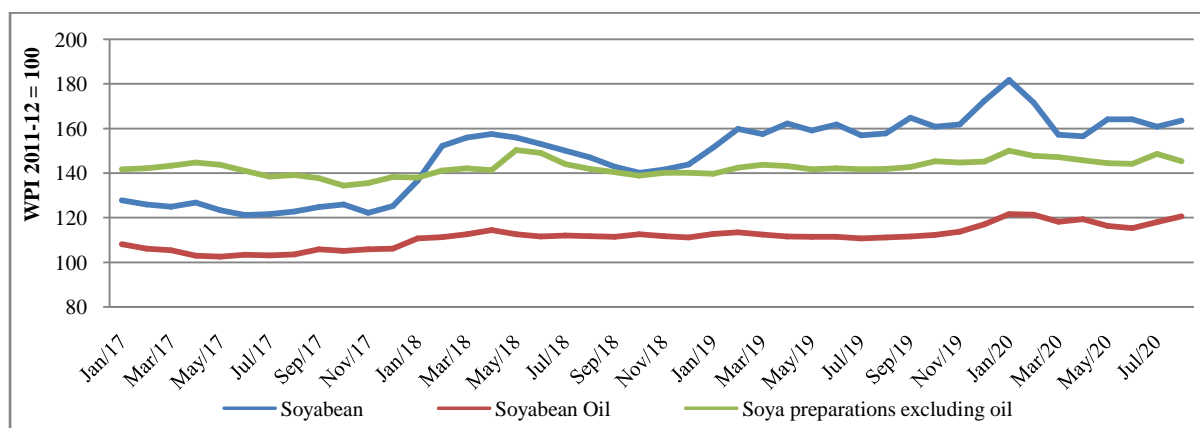


Fig. 5. Wholesale price index for soybean and products. (Data source: Office of Economic Advisor, Ministry of Commerce and Industry, GOI).

- Futures prices of soybean has increased from June to August months but declined in September 2020 amid start of crop harvest and new market arrivals. However, futures prices of soybean in October and November contracts have increased by 7.39% and 7.97% in September month over June 2020. The futures prices of soy oil is increasing continuously over the period from June to September in both the contracts by 14.15% and 13.46%, respectively.
- Futures contracts return volatility of Soybean has been increasing slowly from June to September 2020 before harvest but declined by September end with the new arrival in the *mandies* in both (October and November) contracts. Soya oil volatility of contracts were showing mixed trends.

Table 5. Futures contract close prices

Contract	30-Jun-20	31-Jul-20	31-Aug-20	30-Sep-20	% Change
Soybean					
Oct-20	3600	3696	4054	3866	7.39
Nov-20	3600	3694	3972	3887	7.97
Ref Soy Oil (Soyref)					
Oct-20	792	874.5	902.5	904.1	14.15
Nov-20	796	874.8	903.2	903.1	13.46

* Change in price on last day of Sept, 2020 over last day of June, 2020. Source: NCDEX website

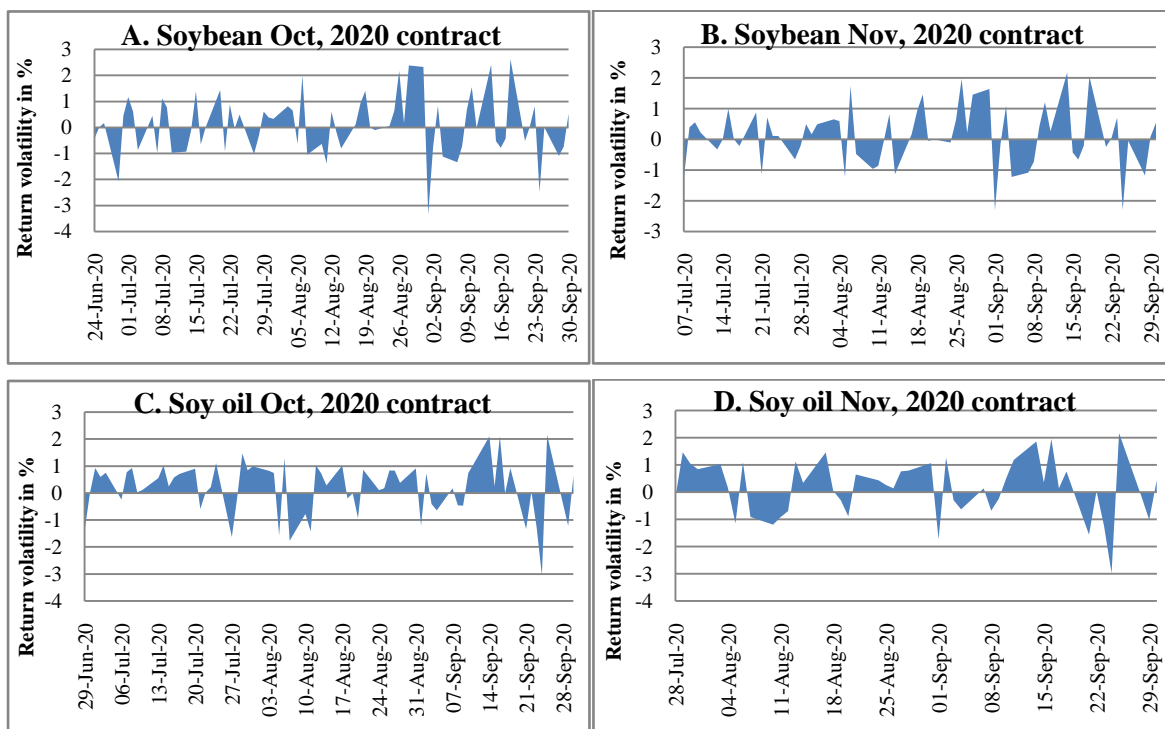


Fig.6. Return volatility of soybean and soy oil futures contracts

Movement of international prices

- The COVID-19 outbreak has had a substantial impact on commodity prices. Many countries implemented travel bans and stay-at-home, lower demand and hence, prices for soybean oil and meal reduced March-April 2020. [Source: Market Monitor, Amis-outlook]
- IGC-GOI soybean sub-index rose by 3% m/m and stem from advances in all key origins. While weighing the rebound of production prospects, US values rose on impact of potential damage by a Derecho storm and dryness in some areas. Additionally, heavily purchase of new crop by China (Fig. 7). [Source: Market Monitor, Amis-outlook]

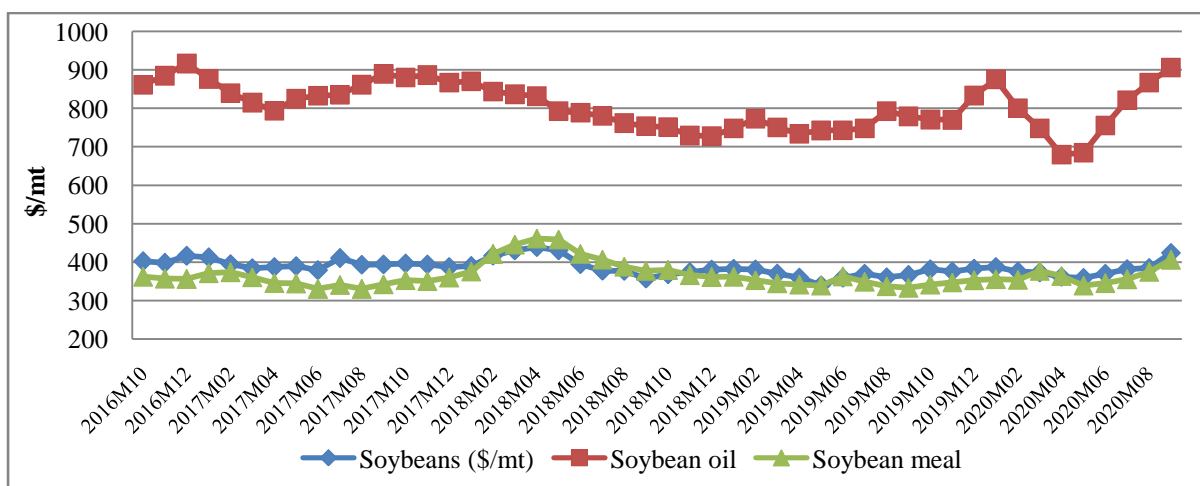


Fig. 7. International price movement of soybean and products. (Data source: World Bank Pink Sheet).

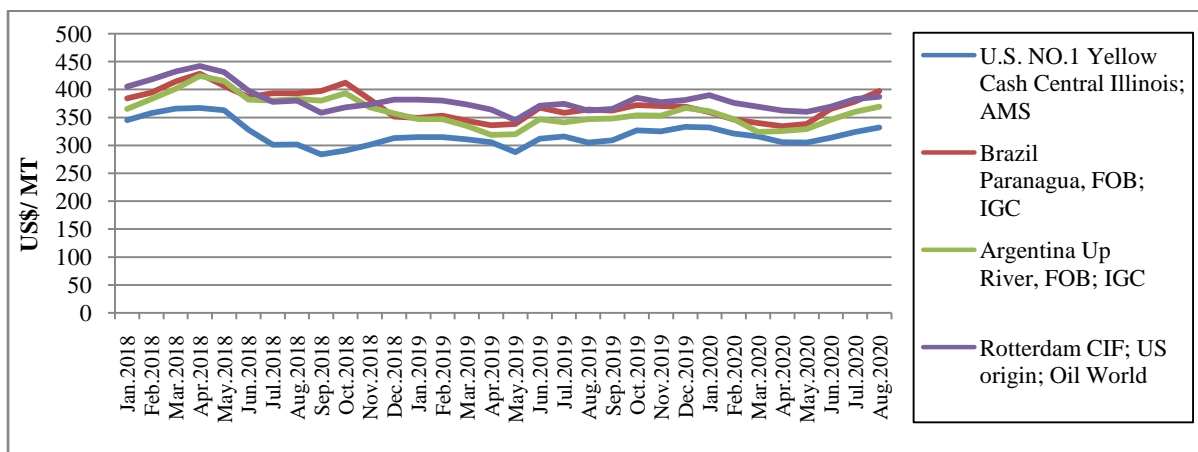


Fig. 8. Soybean price movement in major countries (Data source: USDA).

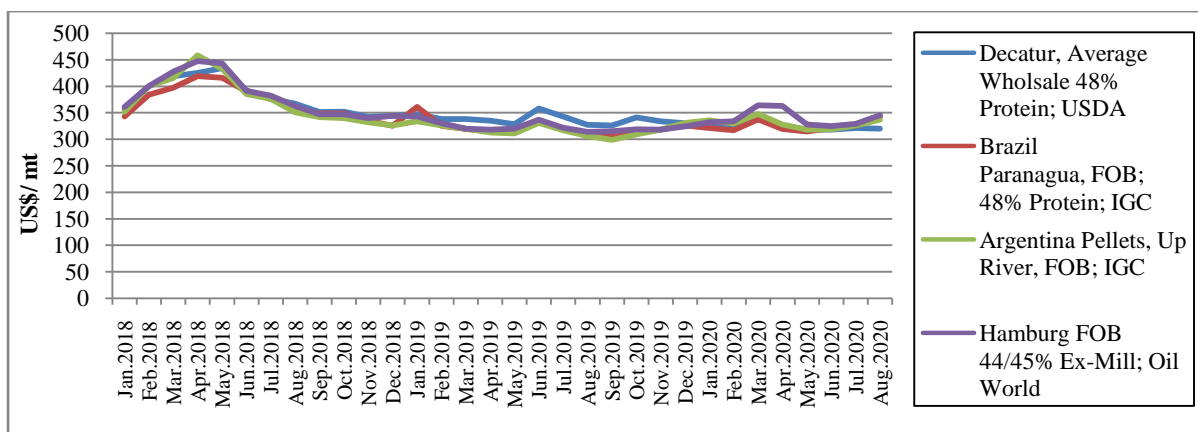


Fig. 9. Soybean Meal price movement in major countries (Data source: USDA).

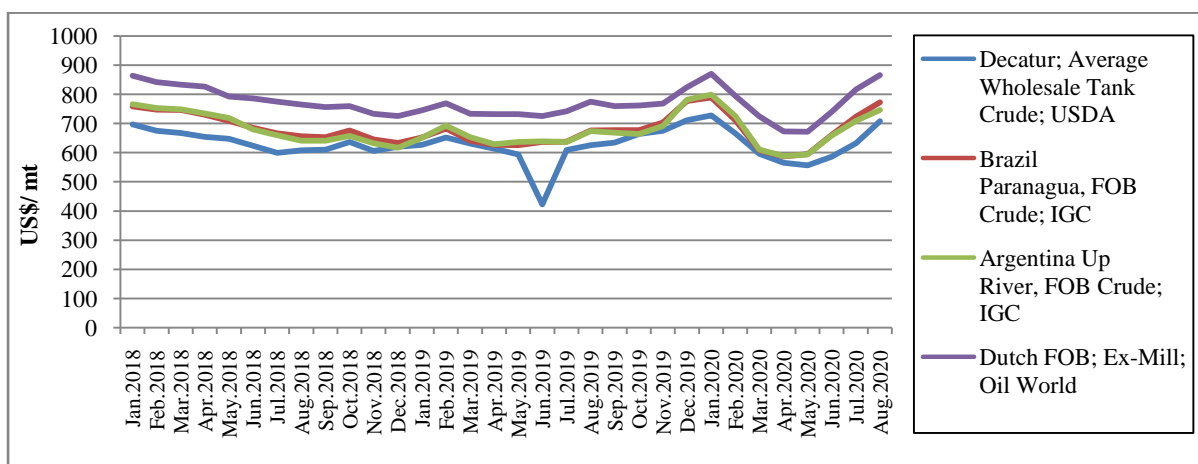


Fig. 10. Soybean Oil price movement in major countries (Data source: USDA).

Policy initiatives (Source: AMIS Market Monitor, FAO)

- On 4th August, Brazil notified proposed Maximum Residual Levels (MRLs) for flupyradifurone in soy cultures (G/SPS/N/BRA/1741).
- On 30th July, Japan notified proposed new MRLs for pyrimidifen in soybeans (G/SPS/N/JPN/771).

ICAR-Indian Institute of Soybean Research, Khandwa Road, Indore-452001
 E-mail for suggestions: dsrdirector@gmail.com / Ram.Patel@icar.gov.in

- On 23rd June, China's agriculture ministry issued safety certificates for two new varieties of GM soybean and also renewed safety certificates for six other GM crops for import - for 5 maize varieties and another soybean.
- On 2 June, the Eurasian Economic Commission (EEC) issued EEC Collegium Decision No. 71, amending its temporary ban on exports of some food products from the Eurasian Economic Union (EAEU). The amendment comes into effect on 13 June 2020 and allows exports of soybeans from the EAEU as of 1 June 2020
- On 7 April, China, 2nd time this year, asked its state-owned stockpiler Sinograin to release 0.5 million tonnes of its own soybean reserve to the state-owned crusher Cofco. Stocks are low due to shipment delays from Brazil and logistic disruptions related to the COVID-19 pandemic.

Export of soybean products from India

- The export of soybean meal/ de-oiled cake for the period April-July 2020-21 has declined by 19.13% in quantity terms and by 0.70% in value terms as compared to the corresponding period previous year. The country exported 2.57 lakh tonnes of soybean meal valued at 1158.58 crores (Table 6).
- The top five major export destinations of soybean meals/ de-oiled cakes during the period April-July 2020 from India were USA (49.35%), Canada (8.41%), Korea RP (7.26%), Japan (5.59%) and UK (4.85%).

Table 6. Month wise export of soybean meal (HS 230400) from India

Months	Quantity (Tonnes)			Value (Rs. Lacs)		
	2018-19	2019-20	2020-21	2018-19	2019-20	2020-21
April	100,351.37	52,521.74	35,196.63	32,801.49	19,405.59	15,954.06
May	111,733.09	119,362.15	53,229.13	39,315.87	42,683.27	24,297.70
June	159,147.60	70,197.50	78,912.56	54,213.75	26,579.19	35,586.17
July	141,895.47	75,473.11	89,466.48	48,702.32	27,974.35	40,020.31
August	141,465.24	74,699.74		48,350.03	27,586.84	
September	86,728.51	69,287.26		30,919.37	25,499.22	
October	130,249.82	63,018.03		41,894.14	23,436.06	
November	324,509.97	79,690.79		97,017.62	30,983.96	
December	398,871.16	87,253.66		117,324.34	35,137.11	
January	317,450.45	53,382.86		94,026.85	22,296.99	
February	200,779.66	68,176.61		64,700.68	28,363.00	
March	327,748.57	57,145.59		108,118.92	24,942.33	
Total	2440930.91	870209.04	256804.8	777385.38	334887.91	115858.24

Source: DGCI&S, Kolkata

Import of soybean oil and other soy products to India

- India imported about 1240074.40 tonnes of soybean crude oil valued at Rs. 6826.65 crores during April- July 2020-21, which was 24.06% and 39.20% higher in terms of quantity and value, respectively as compared to the same period last year (2019-20) (Table 7).
- More than 95% soybean crude oil during April-July 2020 was imported from three countries viz. Argentina (70%), Brazil (18.5%) and Switzerland (7.14%).
- About 2.74 Lakh tonnes of soybean valued at Rs. 1217.62 Crores has been imported during April-July 2020 mainly from Benin (50%), Togo (21.7%) UAE (9.34%), Mozambique (4.63) and Ethiopia (3.05%).

ICAR-Indian Institute of Soybean Research, Khandwa Road, Indore-452001

E-mail for suggestions: dsrdirector@gmail.com / Ram.Patel@icar.gov.in

Table 7. Monthly import of soybean oil & its fractions w/n refined but not chemically modified (HS 1507) in India

Months	Quantity (Tonnes)			Value (Rs. Lacs)		
	2018-19	2019-20	2020-21	2018-19	2019-20	2020-21
April	235,491.89	217,932.60	235,144.72	125,604.73	109,343.88	141,896.99
May	325,481.53	277,051.50	206,770.26	176,372.71	138,968.52	113,590.05
June	331,957.32	172,217.99	334,974.48	179,707.99	83,136.99	179,613.56
July	283,753.41	332,392.62	463,184.94	149,675.45	158,989.00	247,564.08
August	353,306.10	425,183.76		179,983.00	206,520.89	
September	357,077.97	273,695.69		181,343.79	136,259.28	
October	225,183.25	399,997.52		117,089.45	204,423.31	
November	215,071.92	179,567.78		111,748.30	94,246.87	
December	157,533.66	205,550.88		79,366.54	112,073.39	
January	185,100.32	267,746.12		92,373.77	150,367.99	
February	234,766.87	259,050.62		116,750.75	154,996.94	
March	283,828.46	303,257.99		144,426.50	183,022.95	
Total	3188552.7	3313645.07	1240074.40	1654442.98	1,732350.01	682664.68

Source: DGCI&S, Kolkata

Table 6. Supply and distribution of soybean in major producing countries and the World.

Country	Year	Area Harvested	Production	Yield	Opening Stocks	Domestic Supply	Imports (NMY)	Total Supply	Domestic Utilization	Exports (NMY)	Total Utilization	Closing Stocks
Argentina	2020/21	16.8	50	2.98	12.5	62.5	4.5	67	46.9	7.6	67	12.5
Argentina	2019/20	17.4	53.5	3.07	12.5	66	3	69	49.7	8.6	69	10.7
Argentina	2018/19	17.5	54	3.09	9	63	3.2	66.2	48.2	8.5	66.2	9.5
Argentina	2017/18	16	37.78	2.361	16.8	54.58	3.8	58.38	49.38	3.2	58.38	5.8
Brazil	2020/21	37.85	133	3.51	2.59	135.59	0.15	135.74	47.94	83.6	135.74	4.2
Brazil	2019/20	36.6	123.2	3.37	2	125.2	0.15	125.35	47.45	74	125.35	3.9
Brazil	2018/19	35.82	114.3	3.19	0.12	114.42	0.7	115.12	45.71	68.8	115.12	0.61
Brazil	2017/18	35.15	119	3.385	6.468	125.46	0.3	125.76	49.364	74	125.76	2.4
China	2020/21	9.6	18.8	1.96	19.2	38	98.5	136.5	114.5	0.2	136.5	21.8
China	2019/20	9.35	18.1	1.94	11	29.1	87.1	116.2	103.85	0.15	116.2	12.2
China	2018/19	8.4	16	1.91	13.4	29.4	87.6	117	106.09	0.1	117	10
China	2017/18	7.783	14.55	1.869	14.5	29.05	95.2	124.25	110.45	0.4	124.25	13.4
India	2020/21	11.3	13.2	1.17	0.7	13.9	0.01	13.91	12.61	0.3	13.91	1
India	2019/20	11.1	11	0.99	0.4	11.4	0.16	11.56	11.41	0.05	11.56	0.1
India	2018/19	10.8	13	1.2	0.16	13.16	0.01	13.17	12.56	0.2	13.17	0.4
India	2017/18	10.447	10.934	1.047	0.938	11.872	0.155	12.027	11.584	0.285	12.027	0.158
USA	2020/21	33.91	117.4	3.46	15.74	133.12	0.41	133.53	63.18	57.83	133.53	12.52
USA	2019/20	30.72	96.84	3.15	24.74	121.58	0.41	121.99	60.76	48.31	121.99	12.92
USA	2018/19	35.65	123.66	3.47	11.92	135.58	0.54	136.12	135.58	51.03	136.12	24.49
USA	2017/18	36.243	119.52	3.298	8.21	127.73	0.6	128.33	59.21	57.43	128.33	11.69
World	2020/21	127.91	370.8	2.9	57.53	428.33	165.78	594.11	369.54	166.54	594.11	58.03
World	2019/20	123.89	342.3	2.76	58.45	400.75	149.89	550.64	356.85	148.38	550.64	45.42
World	2018/19	126.86	360.6	2.84	40.98	401.59	149.7	551.29	352.69	146.71	551.29	51.88
World	2017/18	124.58	340.27	2.731	52.603	392.87	152.2	545.08	353.26	151.9	545.08	39.908

Source: AMIS, FAO website.

ICAR-Indian Institute of Soybean Research, Khandwa Road, Indore-452001
 E-mail for suggestions: dsrdirector@gmail.com / Ram.Patel@icar.gov.in

Table 7. Import of soybean and products in India (Quantity in tonnes and Value in Rs. Lakhs)

HS Code	Crop commodity	2017-18		2018-19		2019-2020		2020-21 (Apr-Jul)	
		Qty.	Value	Qty.	Value	Qty.	Value	Qty.	Value
15071000	Soybean crude oil w/n degummed	3152168.50	1648879.32	3,165,906.25	1,637,264.82	3239816	1670599.47	11,98,219.25	6,45,323.10
120190	Other soybeans w/n broken	81715.18	25024.61	156,694.06	53,489.42	349500.25	130484.37	2,73,486.69	1,21,762.11
35040091	Isolated soya protein	4472.65	9428.33	7,188.41	18,325.20	6667.41	15951.93	3,214.30	8,328.07
120110	Soybeans w/n broken of seed qlty	7407.92	1924.69	355.00	137.38	11149.62	4139.79	5,548.56	2,880.51
23040010	Oil-cake & oil-cake meal of soybean expeller variety	4057.52	1485.00	42,952.37	11,243.27	859.69	374.47	991.46	338.82
21031000	Soy sauce	854.74	858.68	980.80	1,244.10	1085.64	1460.19	227.46	337.75
15079090	Soybean oil other than edible grade	89.77	252.51	178.98	464.29	437.72	669.09	60.81	174.41
15079010	Soybean oil of edible grade	112.25	167.89	22,467.43	16,713.85	73391.48	61081.45	41,794.28	37,167.17
22029910	Soy milk drinks w/n sweetened or flavoured	124.97	71.39	762.63	603.73	497.61	230.79	20.57	13.72
23040030	Meal of soybean solvent extracted (defatted) variety	500.00	194.95	3.00	16.07	74.54	36.56	18,279.77	5,885.63
23040090	Oth. solid residues resulting from of extrn soybean oil	48.91	78.54	128.23	237.89	295.9	250.42	1,194.13	501.32
12081000	Flours and meals of soybeans	0.91	0.65	0	0.07	2.04	2.06	20	10.23
23040020	Oil cake of soybean solvent extracted (defatted) variety	-	-	-	-	-	-		

Source: DGCI&S, Kolkata

ICAR-Indian Institute of Soybean Research, Khandwa Road, Indore-452001
 E-mail for suggestions: dsrdirector@gmail.com / Ram.Patel@icar.gov.in

Table 8. Export of soybean and products from India (Quantity in tonnes and Value in Rs. Lakhs)

HS Code	Crop commodity	2017-18		2018-19		2019-20		2020-21 (Apr-Jul)	
		Qty.	Value	Qty.	Value	Qty.	Value	Qty.	Value
23040030	Meal of soybean solvent extracted (defatted) variety	1,218,605.00	317,615.46	1,561,163.00	464367.64	343976.72	119737.45	44,314.01	17,938.99
120190	Other soybeans w/n broken	270,207.75	98,517.46	184483.02	75581.34	64817.97	27082.65	27,321.15	12,538.41
23040090	Other solid residues resulting from of extraction soybean oil	299,011.50	77,737.16	286632.94	93210.23	120594.4	44707.47	30,037.20	13,103.86
23040010	Oil-cake & oil-cake meal of soybean expeller variety	229,882.19	78,997.29	418293.28	164293	3,97,860.59	1,67,737.30	1,82,146.50	84,713.53
23040020	Oil cake of soybean solvent extracted (defatted) variety	146,954.53	38,692.48	174841.7	55514.52	8564.92	2969.71	307.08	101.86
12081000	Flours and meals of soybeans	44,126.07	15,388.99	20836.82	11390.66	23532.61	11793.17	6,750.08	3,700.14
120110	Soybeans w/n broken of seed qlty	5,142.15	1,966.38	13326.8	5449.28	9851.59	4175.97	3,086.54	1,444.25
15079090	Soybean oil other than edible grade	2,566.61	2,053.04	3293.4	2772.78	2021.4	1966.63	4.17	13.33
15079010	Soybean oil of edible grade	1,154.09	916.60	4245.62	3820.26	8,288.99	7,505.91	4,554.31	4,381.97
21031000	Soy sauce	907.69	564.91	947.07	563.83	1092.74	724.64	297.13	220.37
35040091	Isolated soya protein	214.92	247.43	66.5	254.06	155.56	375.25	198.18	421.49
15071000	Soybean crude oil w/n degummed	64.43	49.28	-	-	2031.91	1630.13	1,273.56	1,088.37
22029910	Soy milk drinks w/n sweetened or flavored	3.33	2.91	-	-	18.79	10.98	0.35	0.47

Source: DGCI&S, Kolkata

ICAR-Indian Institute of Soybean Research, Khandwa Road, Indore-452001
E-mail for suggestions: dsrdirector@gmail.com / Ram.Patel@icar.gov.in